

**WHEN YOU ABSOLUTELY,  
POSITIVELY, CATEGORICALLY,  
UNQUESTIONABLY,  
HUNDRED AND ONE PERCENT-LY,  
COME HELL OR HIGH WATER-LY,  
DEFINITELY, NO IFS-AND-BUTS-LY,  
FOR THE LOVE OF GOD-LY,  
REALLY, REALLY, CAN'T AFFORD  
TO LOSE THAT E-MAIL...**



**MAILVAULT**  
STORE. SEARCH. RETRIEVE.

[www.mailvault.in](http://www.mailvault.in)

## UNIVERSAL EMAIL BACKUP AND ARCHIVING

MailVault archives email from **all standard email servers** and can even work without a mail server.

MailVault offers a **central email backup** for everybody and allows you to restore email at will - for any user, any email id and over any time-range!

Use powerful search-criteria or simply perform a **free-text search through entire message bodies** (and some types of attachments) to find what you seek. Discover conversations and locate that elusive message in your email hay stack instantly.

MailVault's **email deduplication** gives you **single-instance storage**, along with **compression** for a super-efficient and minimal usage of disk space.

Administrators will love MailVault's convenience features like **web-based administration** for easy remote access, bulk-user addition with auto-account activation, single-sign-on support, integration with Active Directory & LDAP and automatic updates. **System alerts** keep you informed without having to constantly monitor MailVault.

End users will appreciate the simple web-based interface and **self-service** options for search and restore of their own email, without needing to rely on expensive helpdesk or administrative resources.

Reports and audit trails keep your solution **compliance ready** and offer business intelligence for email and trends to the management.

MailVault is cross-platform and currently available for **Microsoft Windows and Linux**.

All this is **backed by a responsive development team and great support**, which you probably won't need.

## GET THE MAILVAULT ADVANTAGE

### Disaster recovery

Email backup and restore

### Compliance ready

Long term storage and quick retrieval of all email

### Email monitoring

Corporate messaging surveillance

### Improved server performance

Offload processing and storage from your mailserver

### Reduce administration & helpdesk costs

Easy privileges-based, self-service for users

### Email archival reports

Business intelligence – make information from email

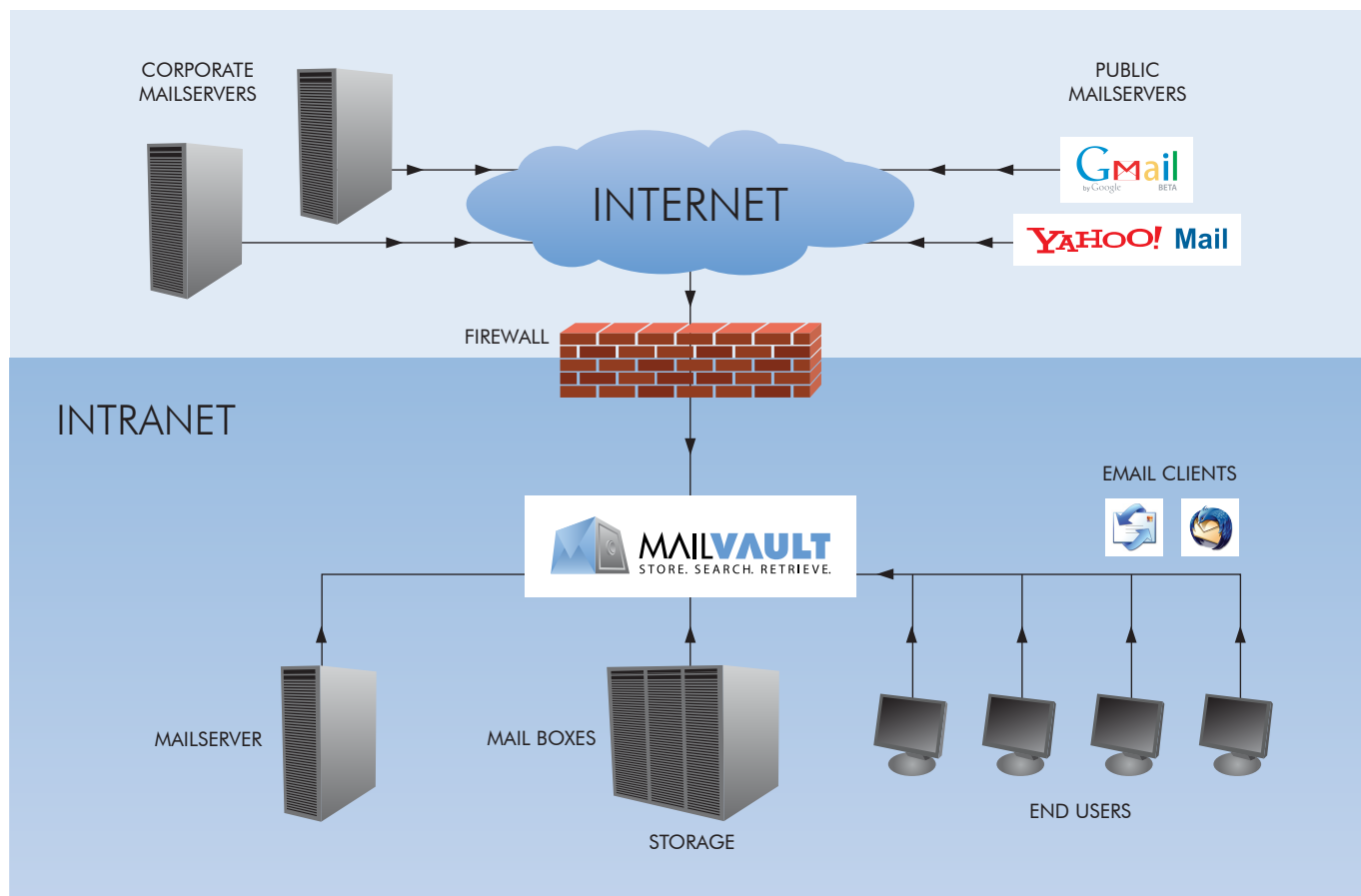
## HOW MAILVAULT WORKS

MailVault's multi-protocol, multi-mail client and raw email support allows for some incredibly flexible deployment scenarios.

MailVault can acquire email from a variety of mail sources. These could be remote or local, from mail servers or simply from a connected file system store.

The messages are acquired, deduplicated, indexed and stored. This process happens in near real-time making messages available for searching and retrieval.

Users connect to MailVault using a web-browser and thus have easy-to-use access from anywhere.



# FEATURES AND BENEFITS OF USING MAILVAULT

## WORKS WITH ALL STANDARD EMAIL SYSTEMS

MS Exchange, Lotus Notes, Sendmail, Postfix, QMail, PostMaster, MDaemon, VPOP3

Standard SMTP servers, POP3 servers, IMAP servers

Supports Unix mbox, Maildir, EML files

Email clients like MS Outlook, Outlook Express, Windows Mail, Windows Live Mail, Thunderbird

GMail, Yahoo Mail, Rediffmail

Stay flexible, protect your investment now and in future



## BACKUP AND ARCHIVE WITH SMART STORAGE

Centralized backup for all employees

Automated, hands-off email collection

Deduplication for single-instance email

Compression further minimizes disk space usage

Filters to keep out non-important messages

Secondary backup facility, with auto-incremental backups

Retention policy for primary storage

## POWERFUL SEARCH AND RETRIEVAL

As easy as Google

Full text message search

Search in attachments (MS-Doc, HTML, PDF)

Advanced search mode for searching on various criteria

Zoom-in with "search within search results"

Quick forward selected email to users

"Forward as original" mode available

Conversation views and forwarding



## ULTRA-EASY EMAIL RESTORE



For any user, any email id, over any time range

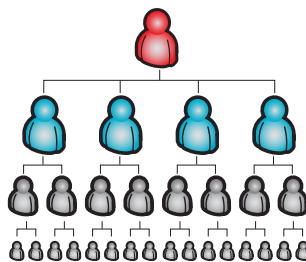
Restore via SMTP & POP3, export as EML

Administrator can restore for any user

Optional self-service for users to restore their own email

No more worries about corrupted mailboxes and accidental deletions

## CONVENIENT AND POWERFUL USER MANAGEMENT



Add single or multiple users easily

Bulk import users from CSV files, Active Directory, LDAP

Choose between manual or secure auto-password generation

Welcome mail with self-account activation

Multiple email ids per user

Optional remote authentication mechanisms

## SYSTEM AND INFORMATION ALERTS



Daily system-activity summary for the administrator

Low disk space warning

MailVault auto-updates and restart alerts

License expiry alerts

Optional personal email usage summary for users

## USER PRIVILEGES AND SECURITY

Supports multiple user-roles

Access and possible actions are based on user role

Email monitoring based on corporate security policy

End user privacy protection by limiting access to only their own mail

Email forwarding rules



## LOGGING AND REPORTS

Automated logging and log rotation

Track administrative and operational activities

See who your top users are

Check inbound and outbound mail flows

Watch email usage and trends

Advanced custom queries

## COMPLIANCE AWARE

Long term storage, searchable and quickly retrievable

Administrator and user activity logs

## ENHANCES PRODUCTIVITY

Keeps your mailserver light and responsive by offloading storage and search

User-friendly, self-service functionality lowers admin time and costs



## OTHER

Accessible via any modern web browser (great for remote use and admin)

Context specific help and guidelines

Convenient and time-saving help request mechanism

New version alerts with auto-update options



MailVault is a DigitalGlue product.

DigitalGlue, an Internet Solutions company, offers consulting and software development services in the areas of security, scalable web applications and the design & architecture of Internet server solutions.



205 Creative Industries, Sunder Nagar,  
Road No. 2, Kalina, Santacruz (E), Mumbai 400 098, India  
T: +91 22 30601091 F: +91 22 26660059  
[www.digitalglue.in](http://www.digitalglue.in)